

HDL-XC62-KV/HDL-NS83-KV/
HDL-NW82-KV/HDL-SIW82
Rhythmus Speaker XC62/NS83/NW82/SIW82

Datasheet

Issued: April 28, 2022
File Edition: V1.0.1



Figure 1. HDL-XC62-KV



Figure 2. HDL-NS83-KV



Figure 3. HDL-NW82-KV



Figure 4. HDL-SIW82

Overview

Rhythmus speakers (See Figure 1- 4) are manufactured with high quality components and engineered to deliver top quality sound performance. These high performance flush mounting loudspeakers have been designed to give you many years of trouble free listening enjoyment. They comes with an easy to install mounting system, with frame and grilles that can be painted to match your room decoration.

Features

- 2-way full-frequency sound design
- Has tweeter (except HDL-SIW82)
- Has woofer (except HDL-NS83-KV)
- Supports high tone protection
- Contemporary low profile grille design

Important Notes

- Be certain that there are no electrical wires, water pipes, or heating ducts in the planned installation area before you start drilling or cutting into the ceiling. If there is an electrical outlet nearby, turn off the circuit breaker to avoid possible injury.
- If no insulation is present, you may want to consider loosely filling the cavity with dacron, or fiberglass insulation to provide some acoustic dampening, improving overall sound quality especially in the low or bass frequencies.
- Do not over-tighten the screws as damage can result to the speaker's frame. Place grille on speakers to complete the installation.

Safety Precautions

- The installation and testing for the product must be carried out by HDL Automation Co., Ltd. or its appointed service agencies. The electric construction shall comply with local laws and safety regulations.
- HDL will not be responsible for any consequence caused by the inexpert or faulty installation and wiring methods, which are not in accordance with the instructions contained in this operating instruction.
- Please do not privately disassemble or replace any parts of the product. Otherwise, it may cause mechanical fault, electric shock, fire or personal injuries.
- Please contact our after-sales departments or our designated service agencies for your maintenance service. Product failures caused by private disassembly are not subject to this warranty.

Package Contents

HDL-XC62-KV(with grille)*2 / Datasheet*1
HDL-NS83-KV(with grille)*1 / Datasheet*1
HDL-NW82-KV(with grille)*2 / Datasheet*1
HDL-SIW82(with grille)*1 / Datasheet*1

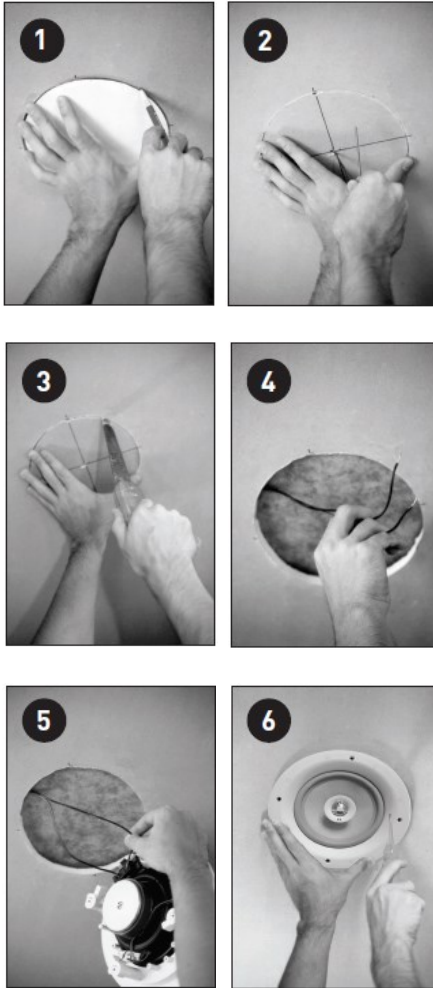


Figure 5. Installation

Installation

Tools:

- Jig saw or wall board saw
- Star shaped screwdriver
- Level
- Coat hanger or about 1.5 feet (40cm) of solid core wire
- Speaker cable
- Drill
- Measuring tape
- Wire strippers
- Wire snake (fish)
- Electronic stud finder (Optional)

Installation - See Figure 5

1. Check for obstructions. Once you have determined the ideal location, tap the wall or ceiling with your knuckles or use an electronic stud finder to check for studs or beams to be avoided.
2. Drill a hole in the center of the traced outline. Cut approximately 1' (30cm) of coat hanger wire and bend it to a right angle in the middle. Insert in the hole and rotate to check for wires, pipes, studs or other obstructions.
3. Carefully cut out the speaker hole with a fine toothed key hole saw or drywall saw. Remove the cutaway and compress the insulation if any.
4. & 5. Drag the speaker cable from the receiver or power amplifier behind the wall or ceiling and out of the speaker hole, allowing 2' (60cm) of slack to protrude. Strip about 3/8" (1cm) off the ends of the speaker wires and connect to the speaker terminals.
6. Ensure the "Dog Ears" are fully extended and insert the speaker in the wall or ceiling. Level and tighten the screws on the speaker frame to fix the speaker in place.

Technical Data

Basic Parameters

Model	HDL-XC62-KV	HDL-NS83-KV	HDL-NW82-KV	HDL-SIW82
Product name	Rhythmus Ceiling Speaker XC62	Rhythmus Ceiling Speaker NS83	Rhythmus Wall Speaker NW82	Rhythmus Wall Speaker SIW82
Woofer	6.5" Kevlar	8" Kevlar	8" Kevlar	8" Paper
Tweeter	1" Ferrofluid cooled silk dome in swivel mount	Dual 3/4" Ferrofluid cooled silk dome	1" Ferrofluid cooled silk dome in swivel mount, +/- 3dB Treble Switch	-
Impedance	8 Ω	8 Ω	8 Ω	8 Ω
Sensitivity	87dB@1W/1M	89dB@1W/1M	87dB@1W/1M	89dB@1W/1M
Power handling	120W	150W	150W	240W
Frequency response	50-20kHz	30-20kHz	30-20kHz	45-500Hz

External Environment

Working temperature	-5°C~45°C
Working relative humidity	≤90%
Storage temperature	-20°C~60°C
Storage relative humidity	≤93%

Specifications

Dimensions	250x144(mm)	278x100mm	262x355x91.5mm	290x480x103mm
Cutout dimensions	210mm	252mm	332x240mm	260x450mm
Mounting depth	135mm	97mm	88mm	91mm
Net weight	1.9 kg	2.9 kg	3.18kg	4.53kg
Housing material	Kevlar, silk dome	Kevlar, silk dome	Kevlar, silk dome	Paper, silk dome
Installation	In-ceiling mounting	In-ceiling mounting	In-wall mounting	In-wall mounting
Protection rating (Compliant with EN 60529)	IP20			

Approved

CE

Technical support

E-mail: hdltickets@hdlautomation.com

Website: <https://www.hdlautomation.com>

©Copyright by HDL Automation Co., Ltd. All rights reserved.
Specifications subject to change without notice.